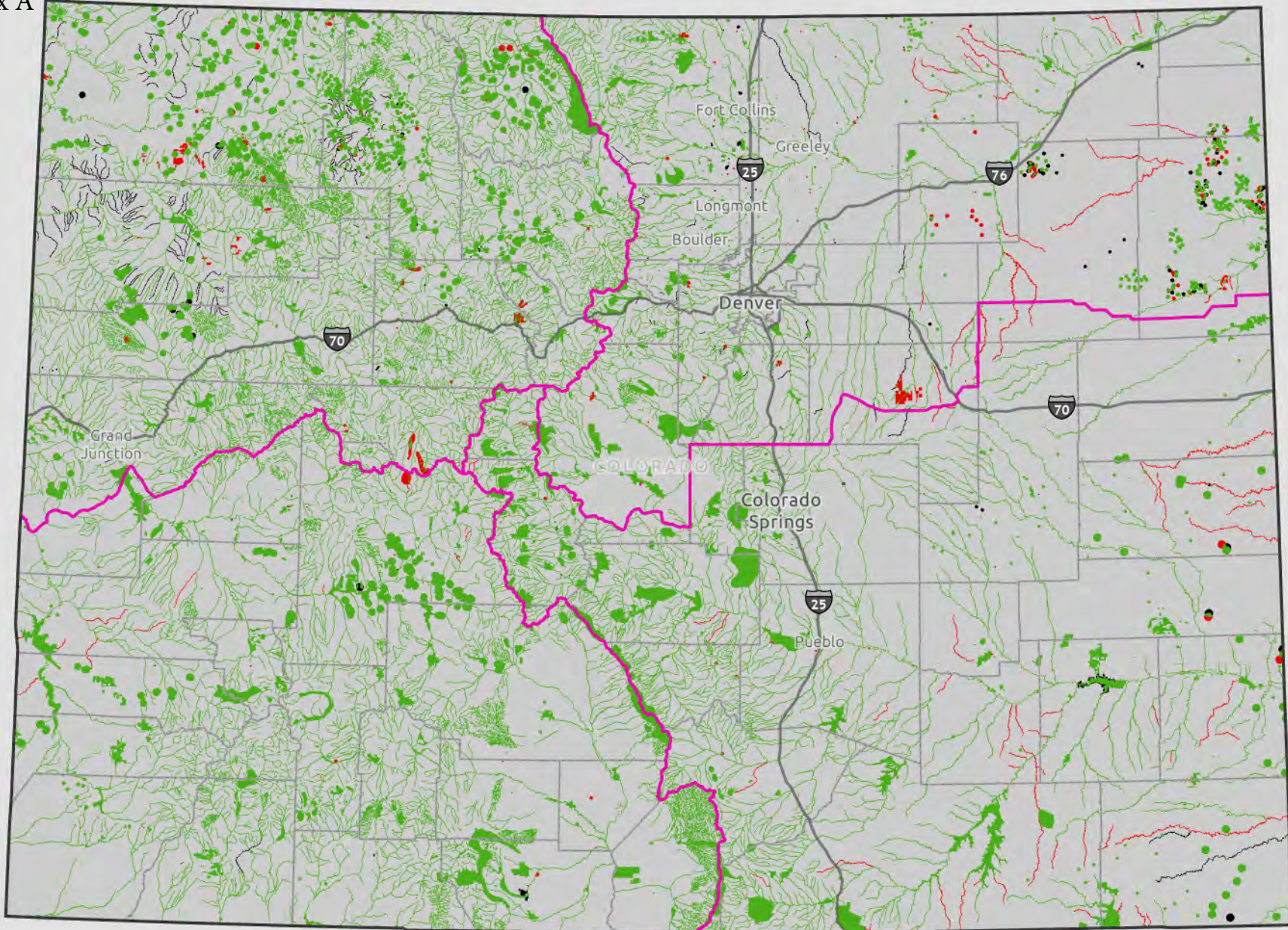


# Appendix A



- 1202C - 2023
- Additions - 2024
- Removals - 2024
- CPW Region Boundaries

The buffer distances as stated in the ECMC Rules are not precisely scaled as symbolized on this statewide map and are provided for representational and reference purposes only.

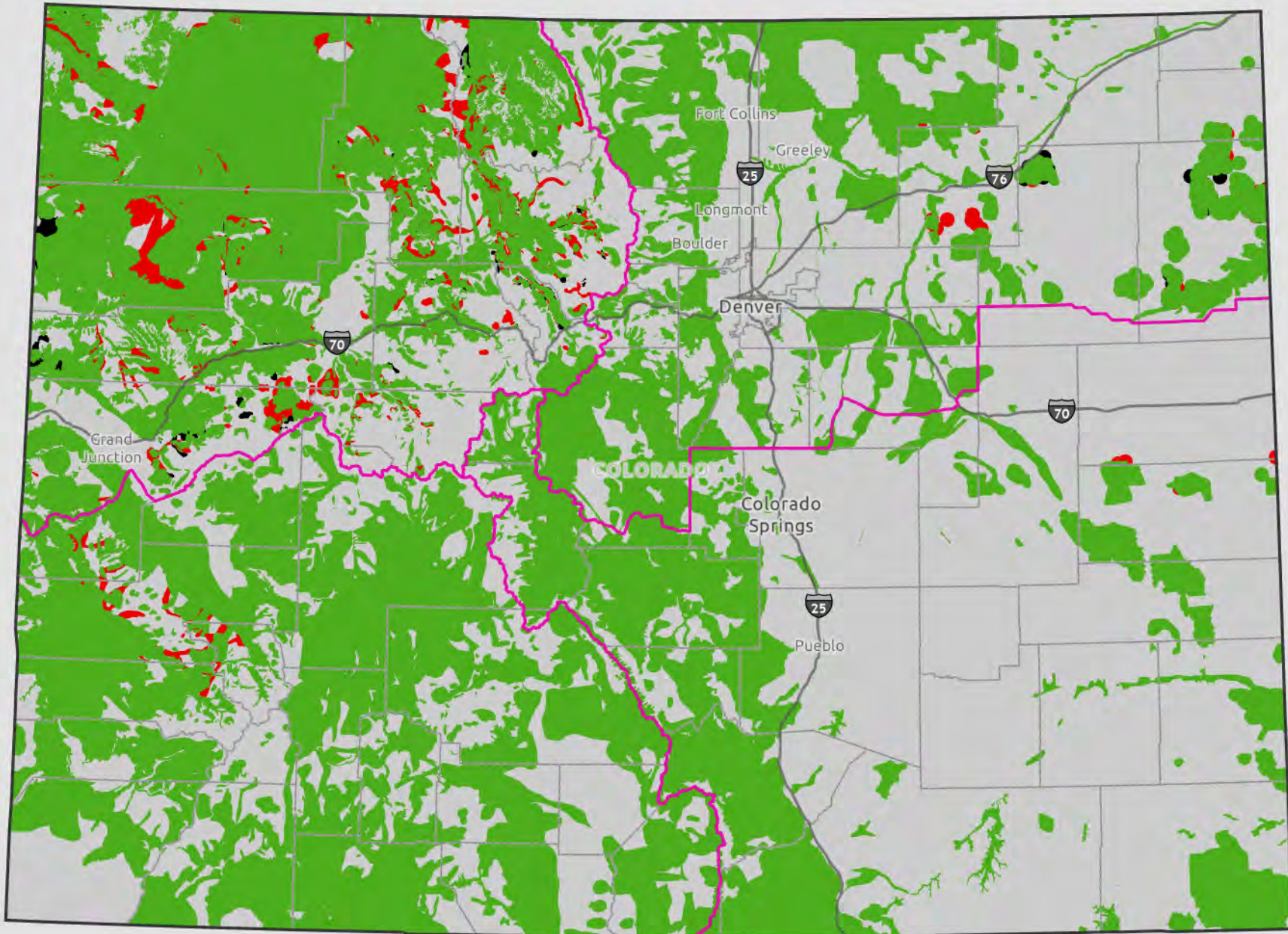
Note: For an interactive map, please refer to the ECMC GIS Online map tool at: <https://ecmc.state.co.us/maps.html#/gisonline>; for up to date source maps and data, contact CPW

## High Priority Habitat Maps 12/21/2023



This product is produced and distributed by: Colorado Parks & Wildlife, GIS Section  
6060 Broadway Denver, CO 80216.

Information depicted hereon is for reference purposes only and is compiled from best available sources. Reasonable efforts have been made to ensure the accuracy of this map. Colorado Parks & Wildlife expressly disclaims responsibility for damages or liability that may arise from the use of this map.



- 1202D - 2023
- Additions - 2024
- Removals - 2024
- CPW Region Boundaries

## High Priority Habitat Maps

### 12/21/2023

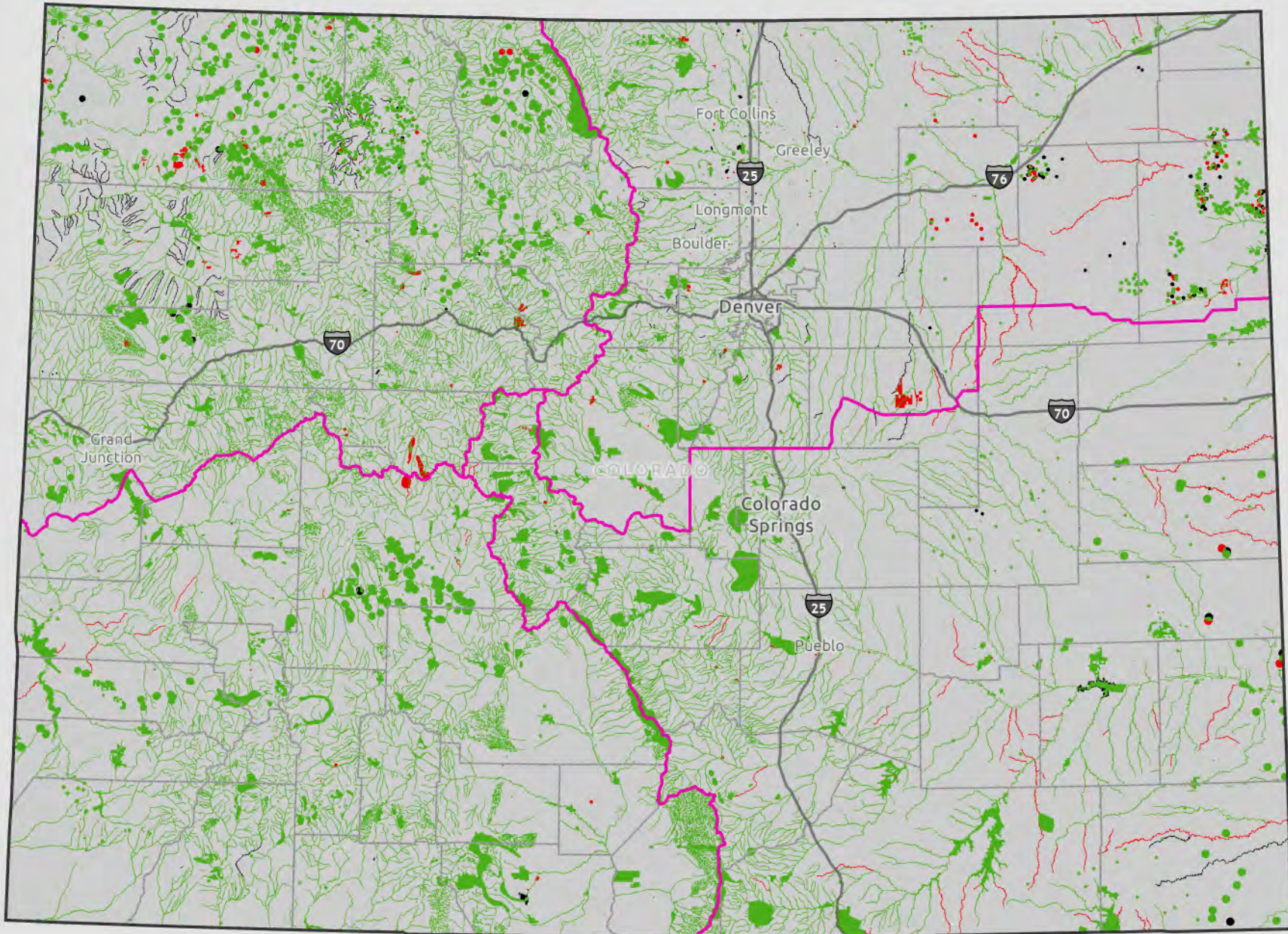
The buffer distances as stated in the ECMC Rules are not precisely scaled as symbolized on this statewide map and are provided for representational and reference purposes only.

Note: For an interactive map, please refer to the ECMC GIS Online map tool at: <https://ecmc.state.co.us/maps.html#/gisonline>; for up to date source maps and data, contact CPW



This product is produced and distributed by: Colorado Parks & Wildlife, GIS Section  
6060 Broadway Denver, CO 80216.

Information depicted hereon is for reference purposes only and is compiled from best available sources. Reasonable efforts have been made to ensure the accuracy of this map. Colorado Parks & Wildlife expressly disclaims responsibility for damages or liability that may arise from the use of this map.



- 1202C - 2023
- Additions - 2024
- Removals - 2024
- CPW Region Boundaries

## High Priority Habitat Maps

### 12/21/2023

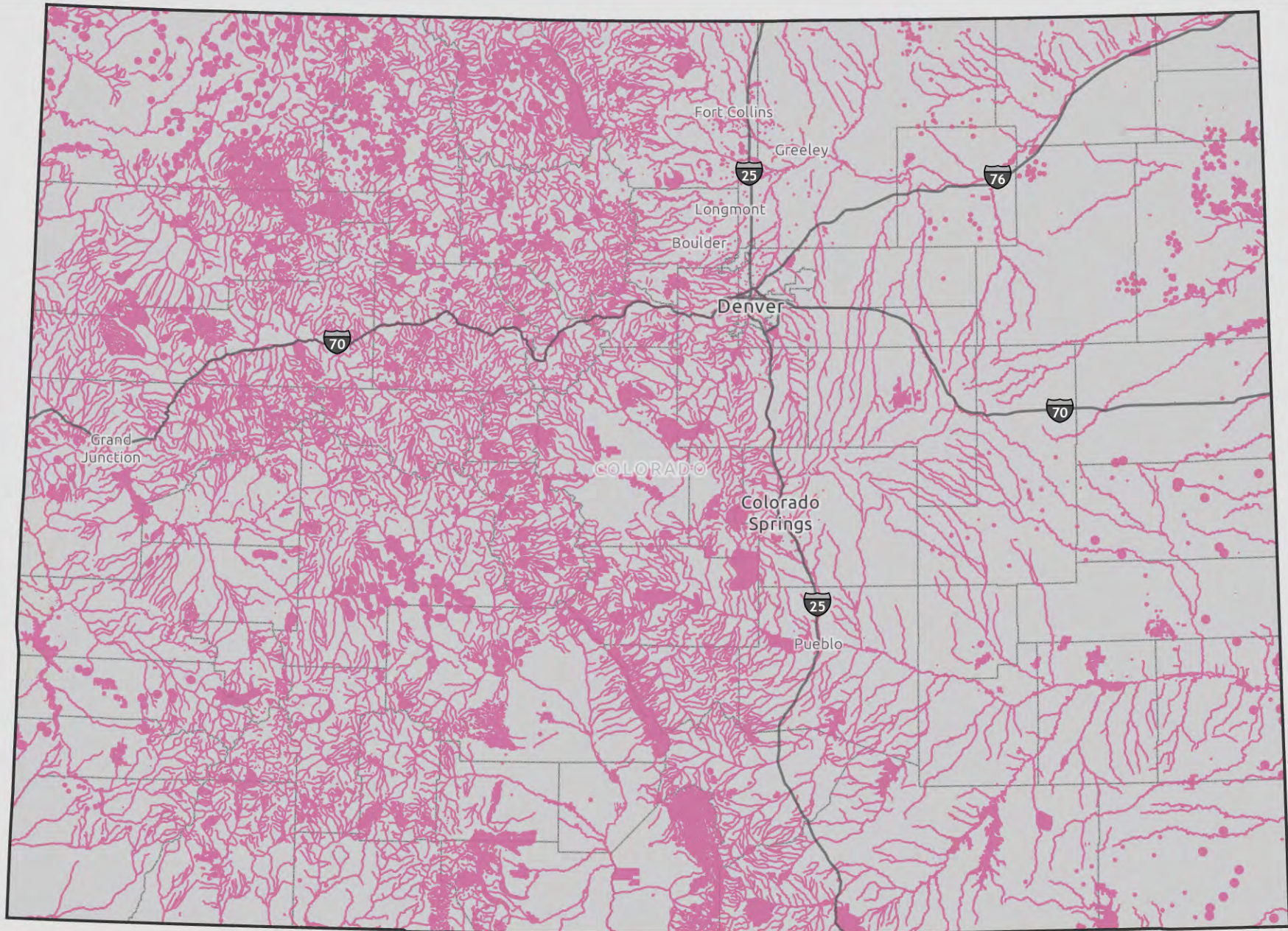
The buffer distances as stated in the ECMC Rules are not precisely scaled as symbolized on this statewide map and are provided for representational and reference purposes only.

Note: For an interactive map, please refer to the ECMC GIS Online map tool at: <https://ecmc.state.co.us/maps.html#/gisonline>; for up to date source maps and data, contact CPW



This product is produced and distributed by: Colorado Parks & Wildlife, GIS Section  
6060 Broadway Denver, CO 80216.

Information depicted hereon is for reference purposes only and is compiled from best available sources. Reasonable efforts have been made to ensure the accuracy of this map. Colorado Parks & Wildlife expressly disclaims responsibility for damages or liability that may arise from the use of this map.



 All 1202C

Appendix VII. High Priority Habitat Maps  
 All 1202.c  
 DRAFT 12/31/2023

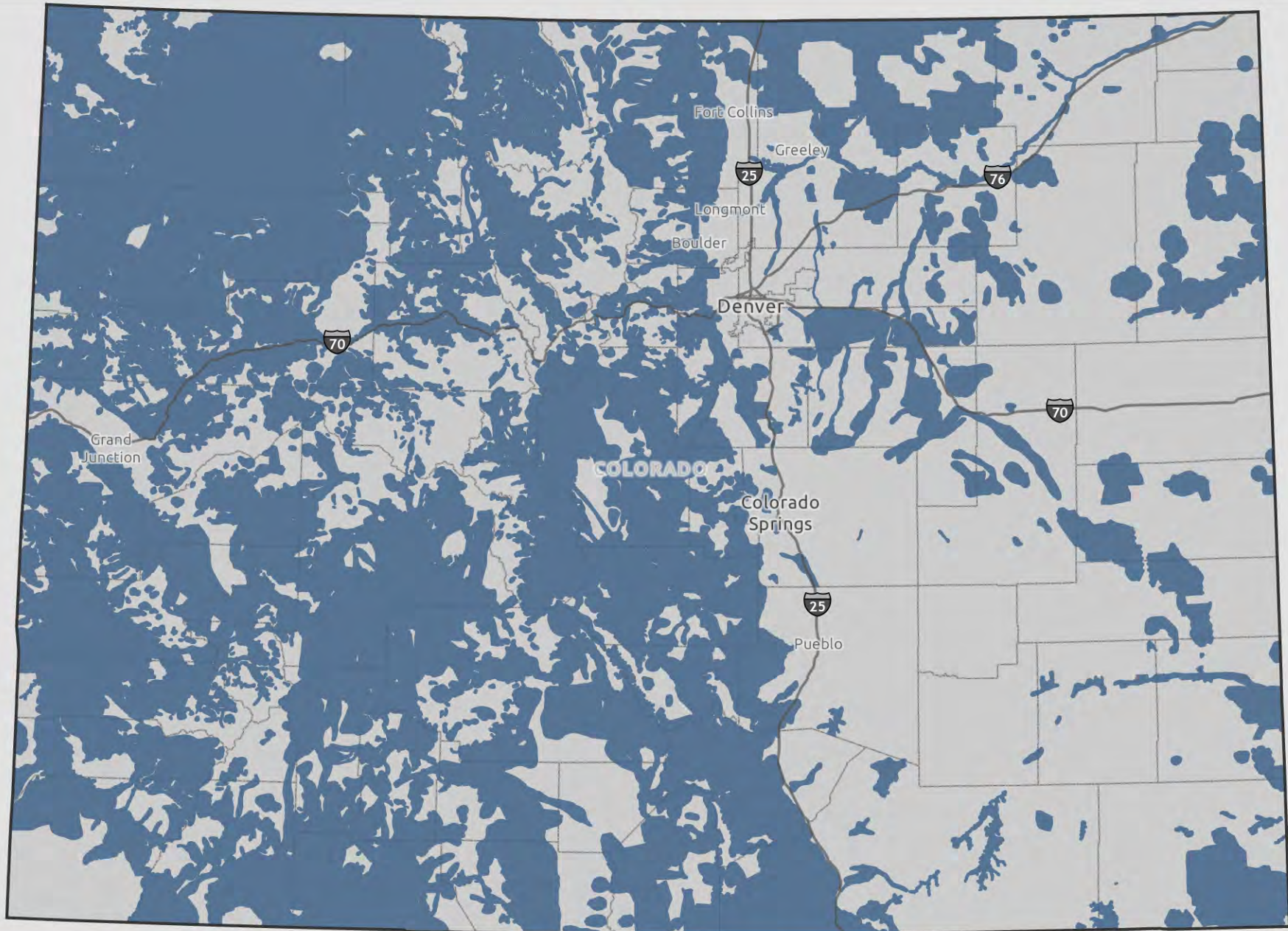
Note: For an interactive map, please refer to the ECMC GIS Online map tool at:  
<https://ecmc.state.co.us/maps.html#/gisonline>;  
 for up to date source maps and data, contact CPW

The buffer distances as stated in the ECMC Rules are not precisely scaled as symbolized on this statewide map and are provided for representational and reference purposes only.



This product is produced and distributed by:  
 Colorado Parks & Wildlife, GIS Section  
 6060 Broadway Denver, CO 80216.

Information depicted hereon is for reference purposes only and is compiled from best available sources. Reasonable efforts have been made to ensure the accuracy of this map. Colorado Parks & Wildlife expressly disclaims responsibility for damages or liability that may arise from the use of this map.



 All 1202D

Appendix VII. High Priority Habitat Maps  
 All 1202.d  
 DRAFT 12/31/2023

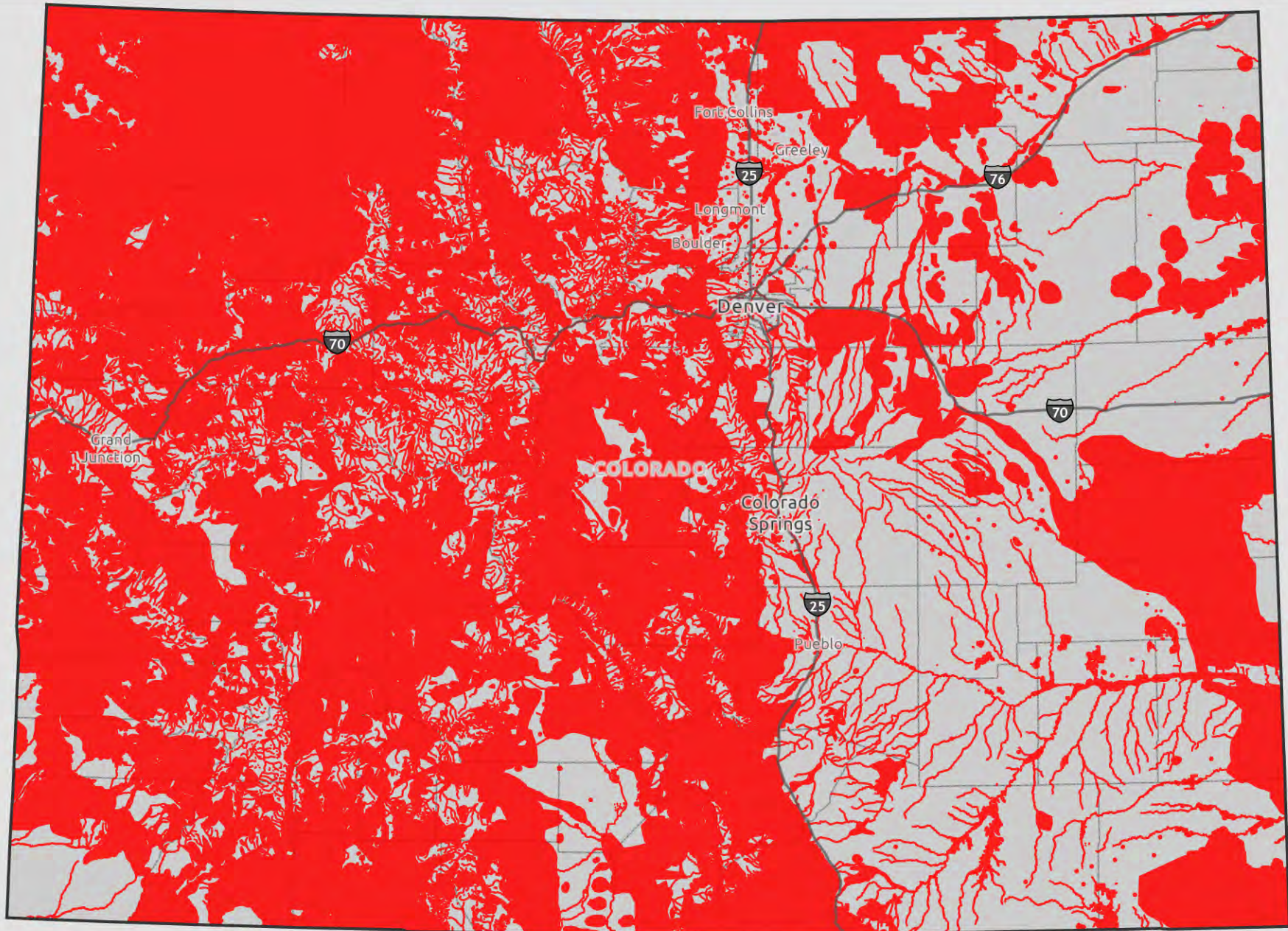
Note: For an interactive map, please refer to the ECMC GIS Online map tool at:  
<https://ecmc.state.co.us/maps.html#/gisonline>;  
 for up to date source maps and data, contact CPW

The buffer distances as stated in the ECMC Rules are not precisely scaled as symbolized on this statewide map and are provided for representational and reference purposes only.



This product is produced and distributed by:  
 Colorado Parks & Wildlife, GIS Section  
 6060 Broadway Denver, CO 80216.

Information depicted hereon is for reference purposes only and is compiled from best available sources. Reasonable efforts have been made to ensure the accuracy of this map. Colorado Parks & Wildlife expressly disclaims responsibility for damages or liability that may arise from the use of this map.



All HPH

## Appendix VII. High Priority Habitat Maps

### All High Priority Habitats

DRAFT 12/31/2023

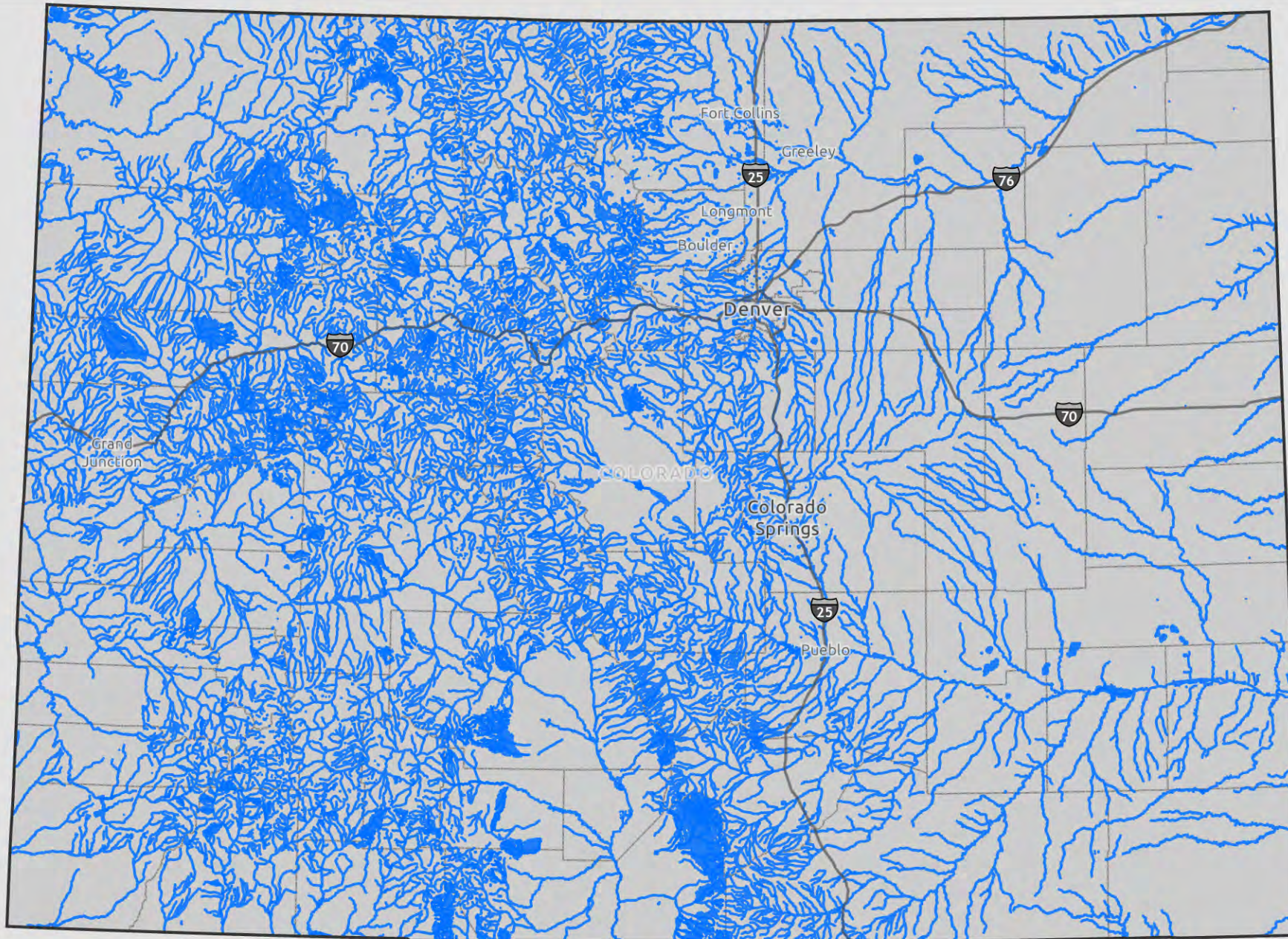
Note: For an interactive map, please refer to the ECMC GIS Online map tool at:  
[https://ecmc.state.co.us/maps.html#/gisonline;](https://ecmc.state.co.us/maps.html#/gisonline)  
 for up to date source maps and data, contact CPW

The buffer distances as stated in the ECMC Rules are not precisely scaled as symbolized on this statewide map and are provided for representational and reference purposes only.



This product is produced and distributed by:  
 Colorado Parks & Wildlife, GIS Section  
 6060 Broadway Denver, CO 80216.

Information depicted hereon is for reference purposes only and is compiled from best available sources. Reasonable efforts have been made to ensure the accuracy of this map. Colorado Parks & Wildlife expressly disclaims responsibility for damages or liability that may arise from the use of this map.



 Aquatic 1202C

Appendix VII. High Priority Habitat Maps  
 Aquatic 1202.c  
 DRAFT 12/31/2023

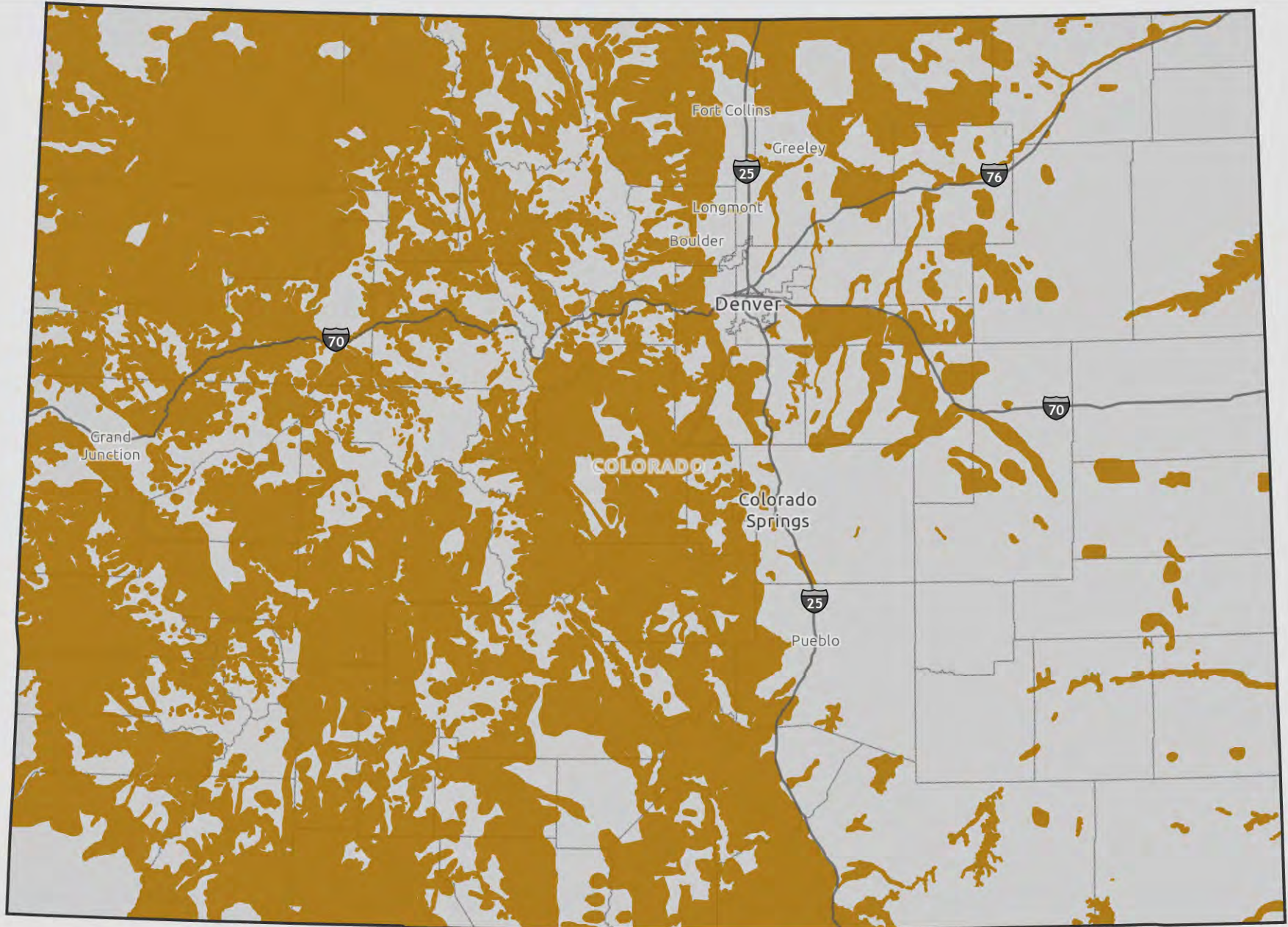
Note: For an interactive map, please refer to the ECMC GIS Online map tool at:  
<https://ecmc.state.co.us/maps.html#/gisonline>;  
 for up to date source maps and data, contact CPW


The buffer distances as stated in the ECMC Rules are not precisely scaled as symbolized on this statewide map and are provided for representational and reference purposes only.



This product is produced and distributed by:  
 Colorado Parks & Wildlife, GIS Section  
 6060 Broadway Denver, CO 80216.

Information depicted hereon is for reference purposes only and is compiled from best available sources. Reasonable efforts have been made to ensure the accuracy of this map. Colorado Parks & Wildlife expressly disclaims responsibility for damages or liability that may arise from the use of this map.



 Big Game 1202D

Appendix VII. High Priority Habitat Maps  
 Big Game 1202.d  
 DRAFT 12/31/2023

The buffer distances as stated in the ECMC Rules are not precisely scaled as symbolized on this statewide map and are provided for representational and reference purposes only.

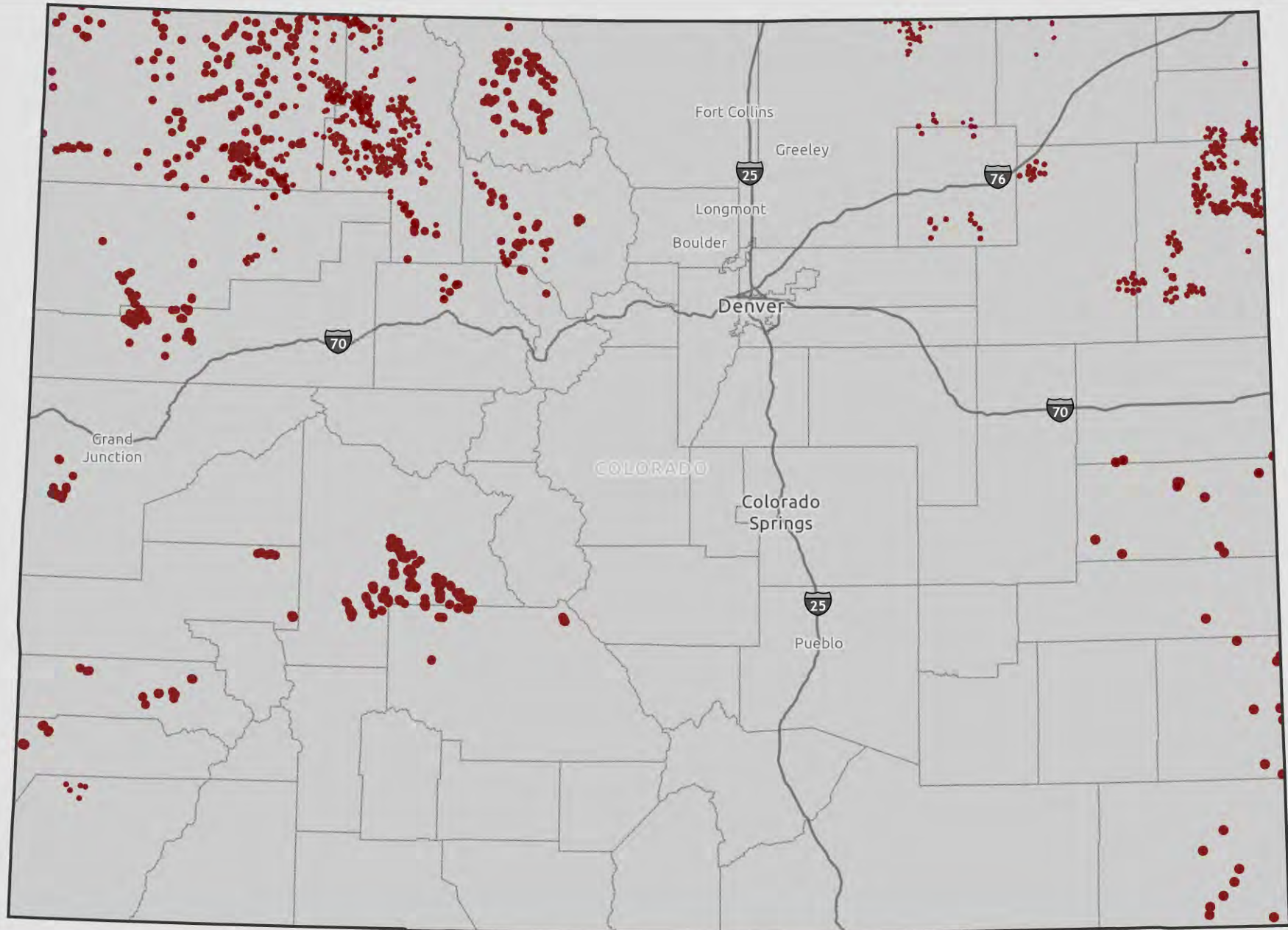
Note: For an interactive map, please refer to the ECMC GIS Online map tool at: <https://ecmc.state.co.us/maps.html#/gisonline>; for up to date source maps and data, contact CPW



This product is produced and distributed by:  
 Colorado Parks & Wildlife, GIS Section  
 6060 Broadway Denver, CO 80216.

Information depicted hereon is for reference purposes only and is compiled from best available sources. Reasonable efforts have been made to ensure the accuracy of this map. Colorado Parks & Wildlife expressly disclaims responsibility for damages or liability that may arise from the use of this map.





Grouse 1202C

Appendix VII. High Priority Habitat Maps  
 Grouse 1202.c  
 DRAFT 12/31/2023

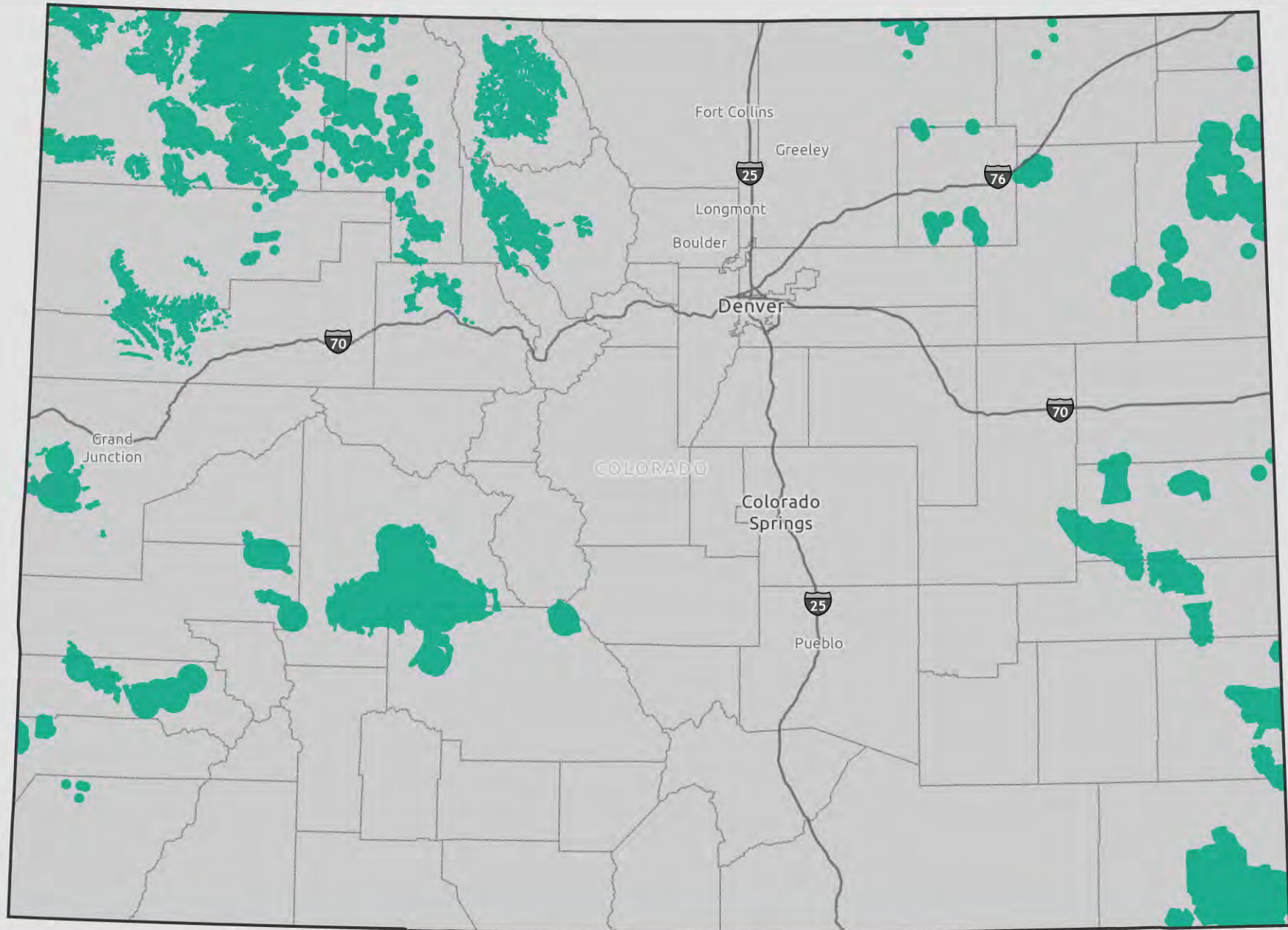
Note: For an interactive map, please refer to the ECMC GIS Online map tool at:  
<https://ecmc.state.co.us/maps.html#/gisonline>;  
 for up to date source maps and data, contact CPW



This product is produced and distributed by:  
 Colorado Parks & Wildlife, GIS Section  
 6060 Broadway Denver, CO 80216.

Information depicted hereon is for reference purposes only and is compiled from best available sources. Reasonable efforts have been made to ensure the accuracy of this map. Colorado Parks & Wildlife expressly disclaims responsibility for damages or liability that may arise from the use of this map.

The buffer distances as stated in the ECMC Rules are not precisely scaled as symbolized on this statewide map and are provided for representational and reference purposes only.



 Grouse 1202D

Appendix VII. High Priority Habitat Maps  
 Grouse 1202.d  
 DRAFT 12/31/2023

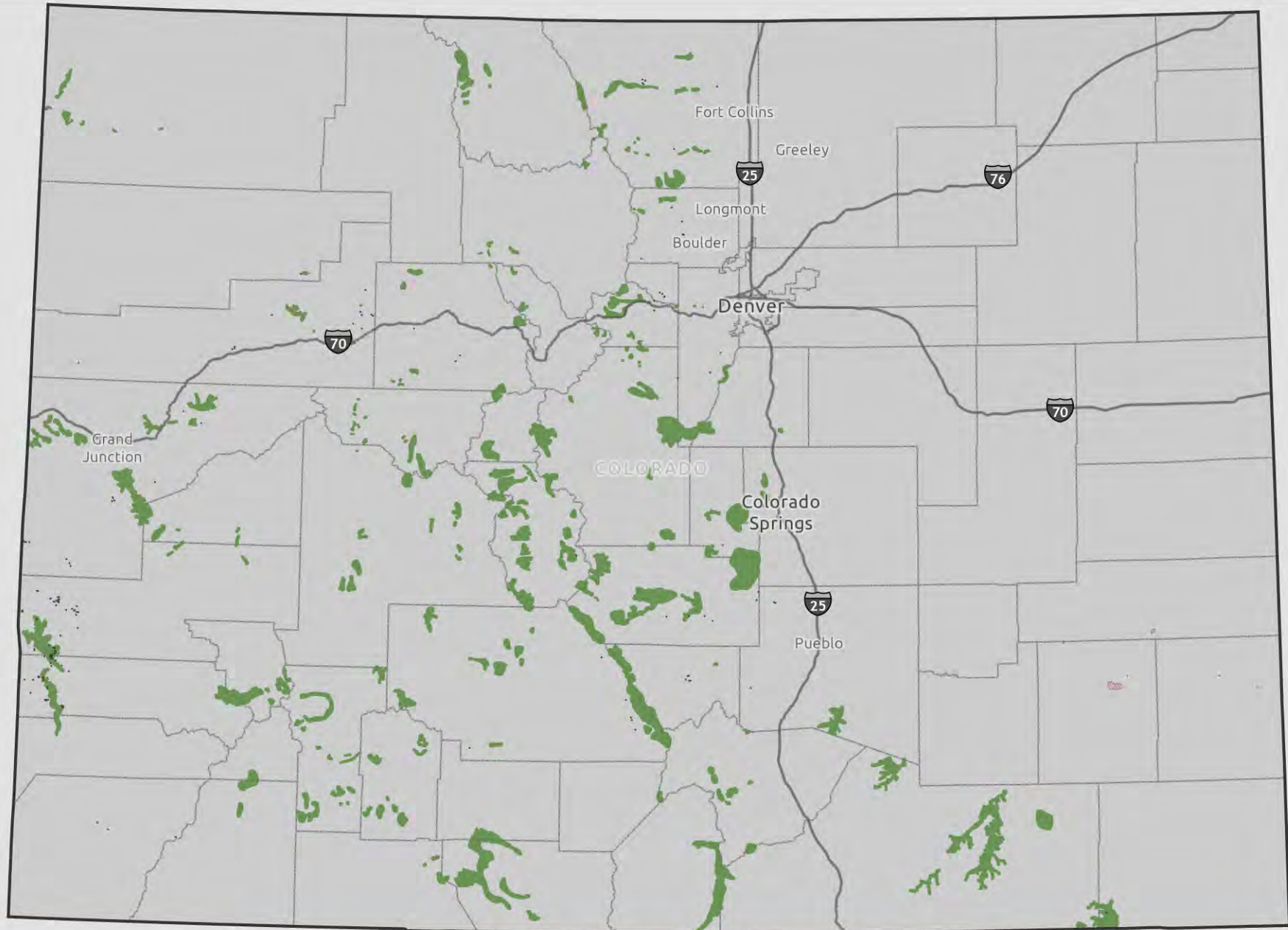
Note: For an interactive map, please refer to the ECMC GIS Online map tool at:  
<https://ecmc.state.co.us/maps.html#/gisonline>;  
 for up to date source maps and data, contact CPW





The buffer distances as stated in the ECMC Rules are not precisely scaled as symbolized on this statewide map and are provided for representational and reference purposes only.



This product is produced and distributed by:  
 Colorado Parks & Wildlife, GIS Section  
 6060 Broadway Denver, CO 80216.

Information depicted hereon is for reference purposes only and is compiled from best available sources. Reasonable efforts have been made to ensure the accuracy of this map. Colorado Parks & Wildlife expressly disclaims responsibility for damages or liability that may arise from the use of this map.



-  Bat Winter Hibernacula
-  Bighorn Sheep Production Area
-  Least Tern Production Area
-  Piping Plover Production Area

## Appendix VII. High Priority Habitat Maps Other Wildlife 1202.c DRAFT 12/31/2023

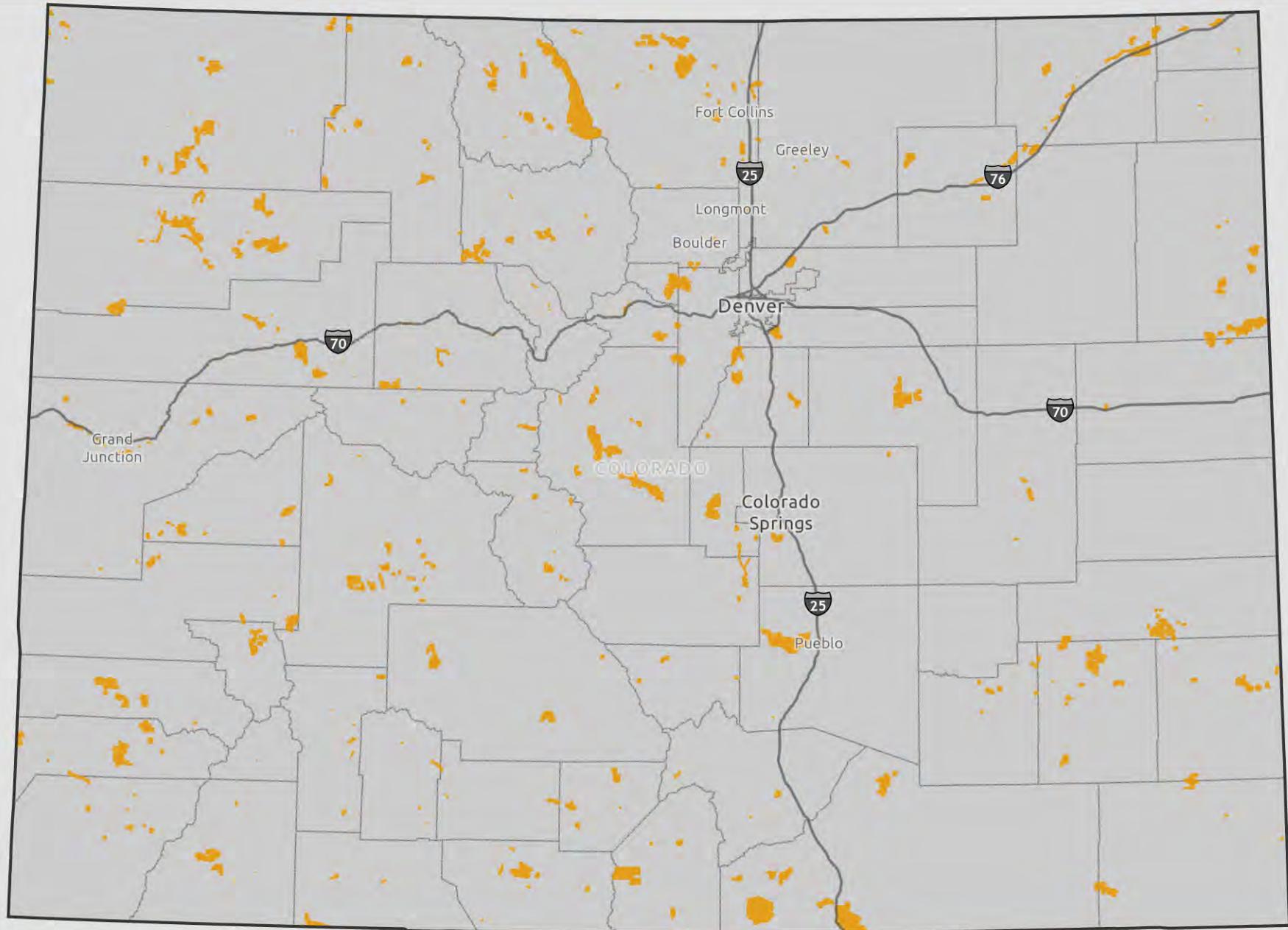
Note: For an interactive map, please refer to the ECMC GIS Online map tool at:  
<https://ecmc.state.co.us/maps.html#/gisonline>;  
 for up to date source maps and data, contact CPW



This product is produced and distributed by:  
 Colorado Parks & Wildlife, GIS Section  
 6060 Broadway Denver, CO 80216.

Information depicted hereon is for reference purposes only and is compiled from best available sources. Reasonable efforts have been made to ensure the accuracy of this map. Colorado Parks & Wildlife expressly disclaims responsibility for damages or liability that may arise from the use of this map.

The buffer distances as stated in the ECMC Rules are not precisely scaled as symbolized on this statewide map and are provided for representational and reference purposes only.



CPW State Parks & State Wildlife Areas

The buffer distances as stated in the ECMC Rules are not precisely scaled as symbolized on this statewide map and are provided for representational and reference purposes only.

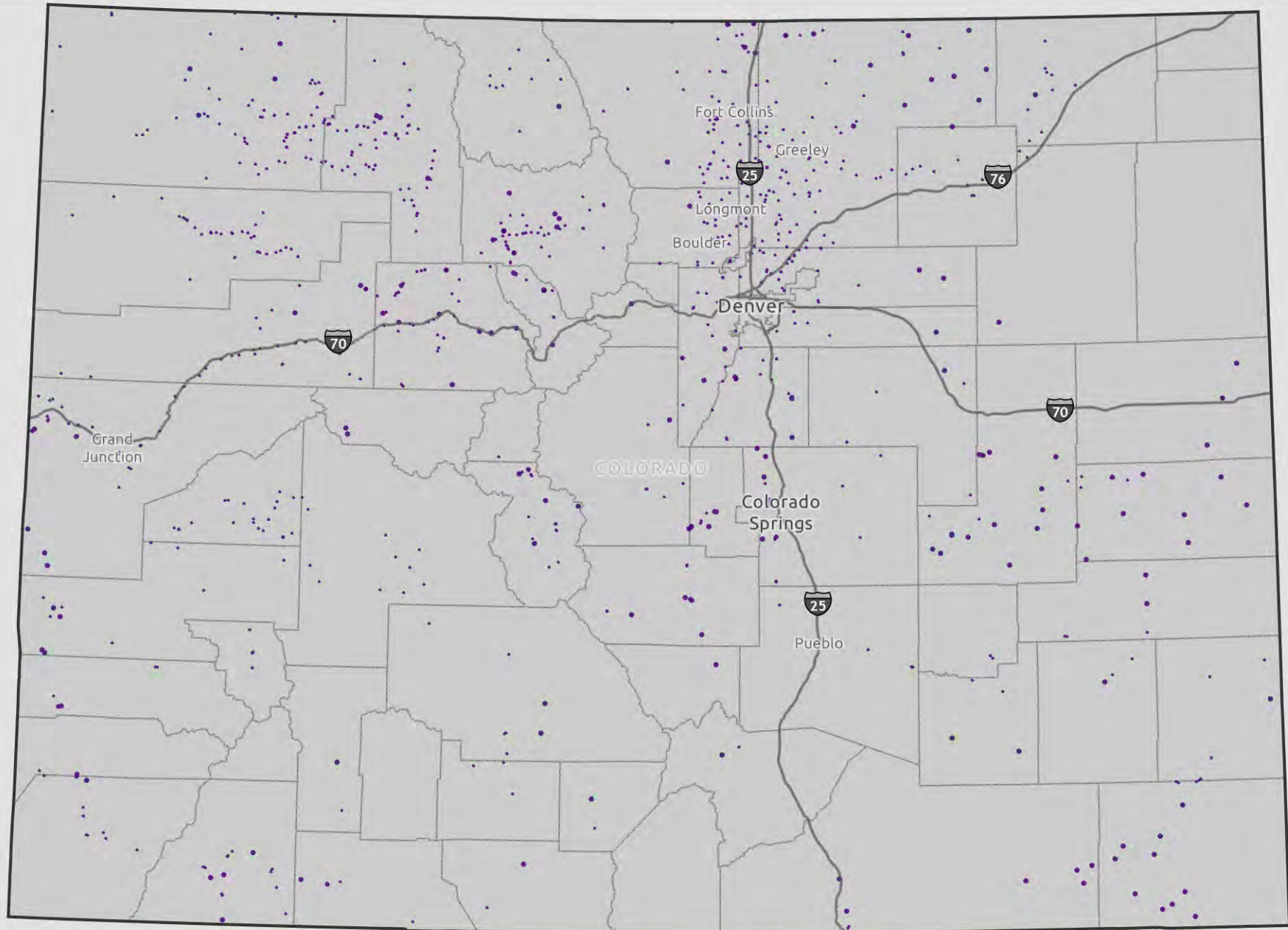
## Appendix VII. High Priority Habitat Maps CPW Owned Properties 1202.c DRAFT 12/31/2023

Note: For an interactive map, please refer to the ECMC GIS Online map tool at:  
<https://ecmc.state.co.us/maps.html#/gisonline>;  
for up to date source maps and data, contact CPW



This product is produced and distributed by:  
Colorado Parks & Wildlife, GIS Section  
6060 Broadway Denver, CO 80216.

Information depicted hereon is for reference purposes only and is compiled from best available sources. Reasonable efforts have been made to ensure the accuracy of this map. Colorado Parks & Wildlife expressly disclaims responsibility for damages or liability that may arise from the use of this map.



 Raptors 1202C

Appendix VII. High Priority Habitat Maps  
 Raptors 1202.c  
 DRAFT 12/31/2023

The buffer distances as stated in the ECMC Rules are not precisely scaled as symbolized on this statewide map and are provided for representational and reference purposes only.

Note: For an interactive map, please refer to the ECMC GIS Online map tool at: <https://ecmc.state.co.us/maps.html#/gisonline>; for up to date source maps and data, contact CPW



This product is produced and distributed by:  
 Colorado Parks & Wildlife, GIS Section  
 6060 Broadway Denver, CO 80216.

Information depicted hereon is for reference purposes only and is compiled from best available sources. Reasonable efforts have been made to ensure the accuracy of this map. Colorado Parks & Wildlife expressly disclaims responsibility for damages or liability that may arise from the use of this map.