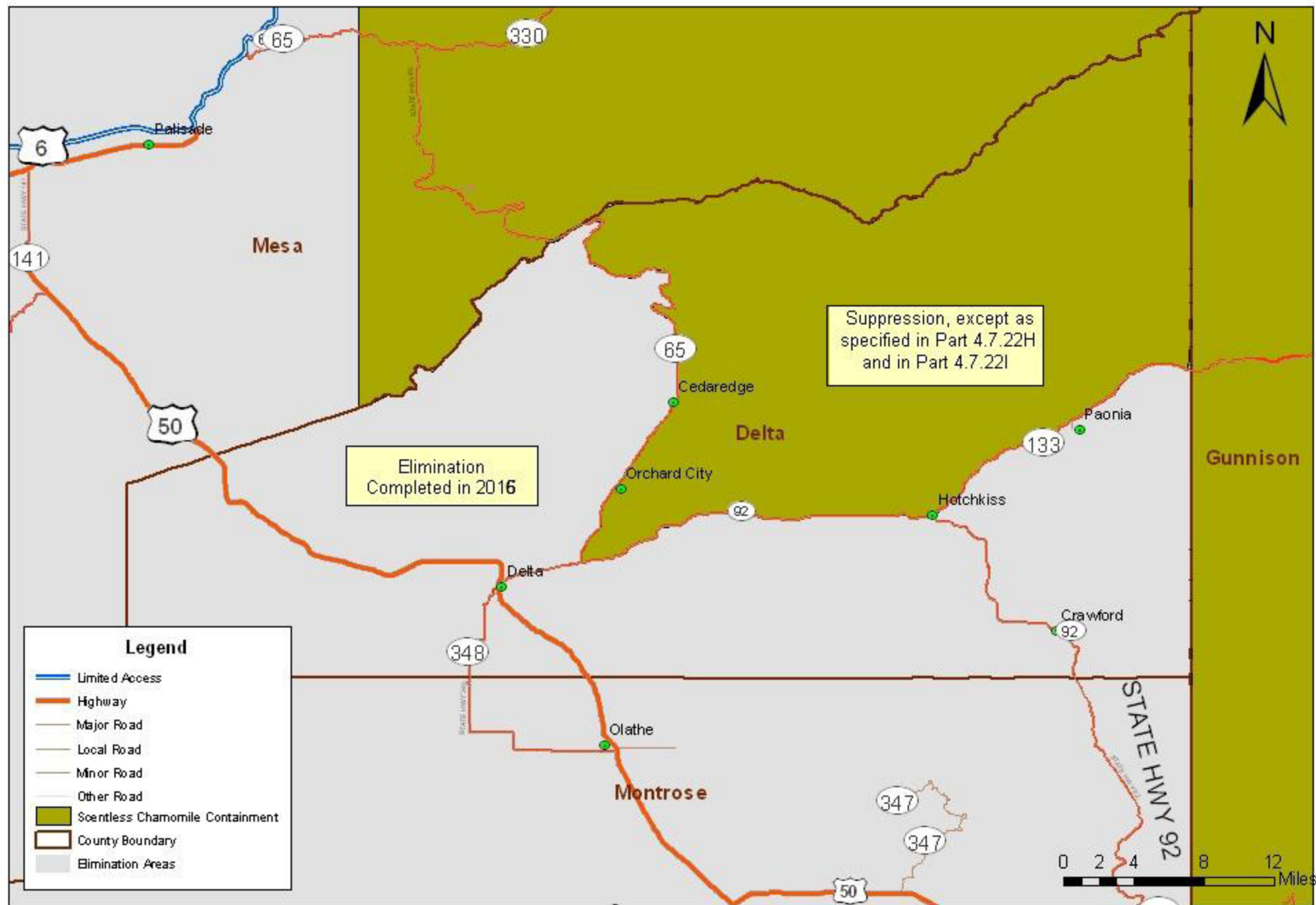


# Scentless, Corn, and Mayweed Chamomile

Figure 204

Delta County

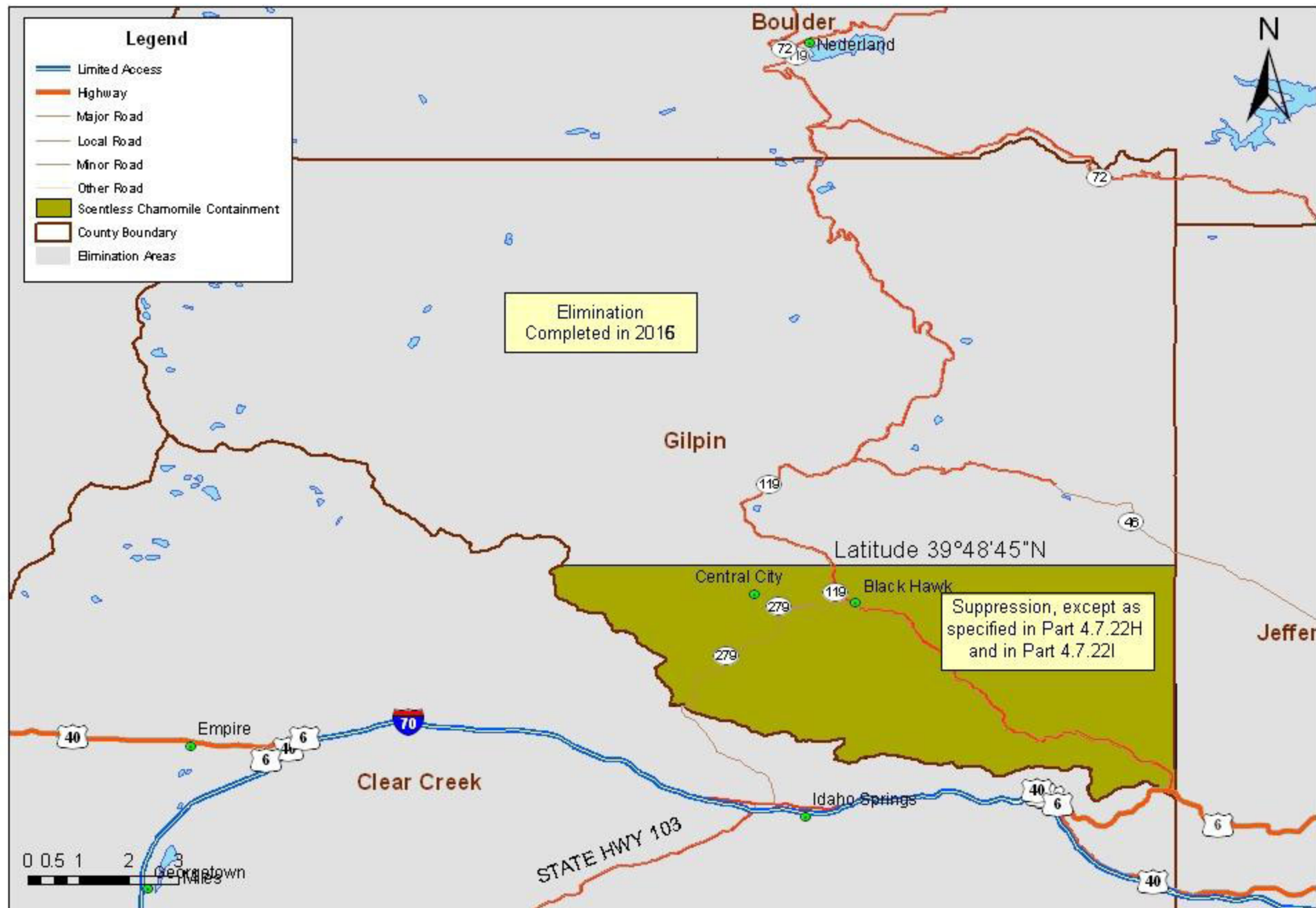
(*Tripleurospermum perforatum*, *Anthemis arvensis*, and *A. cotula*)



# Scentless, Corn, and Mayweed Chamomile

Figure 205

Gilpin County (*Tripleurospermum perforatum*, *Anthemis arvensis*, and *A. cotula*)

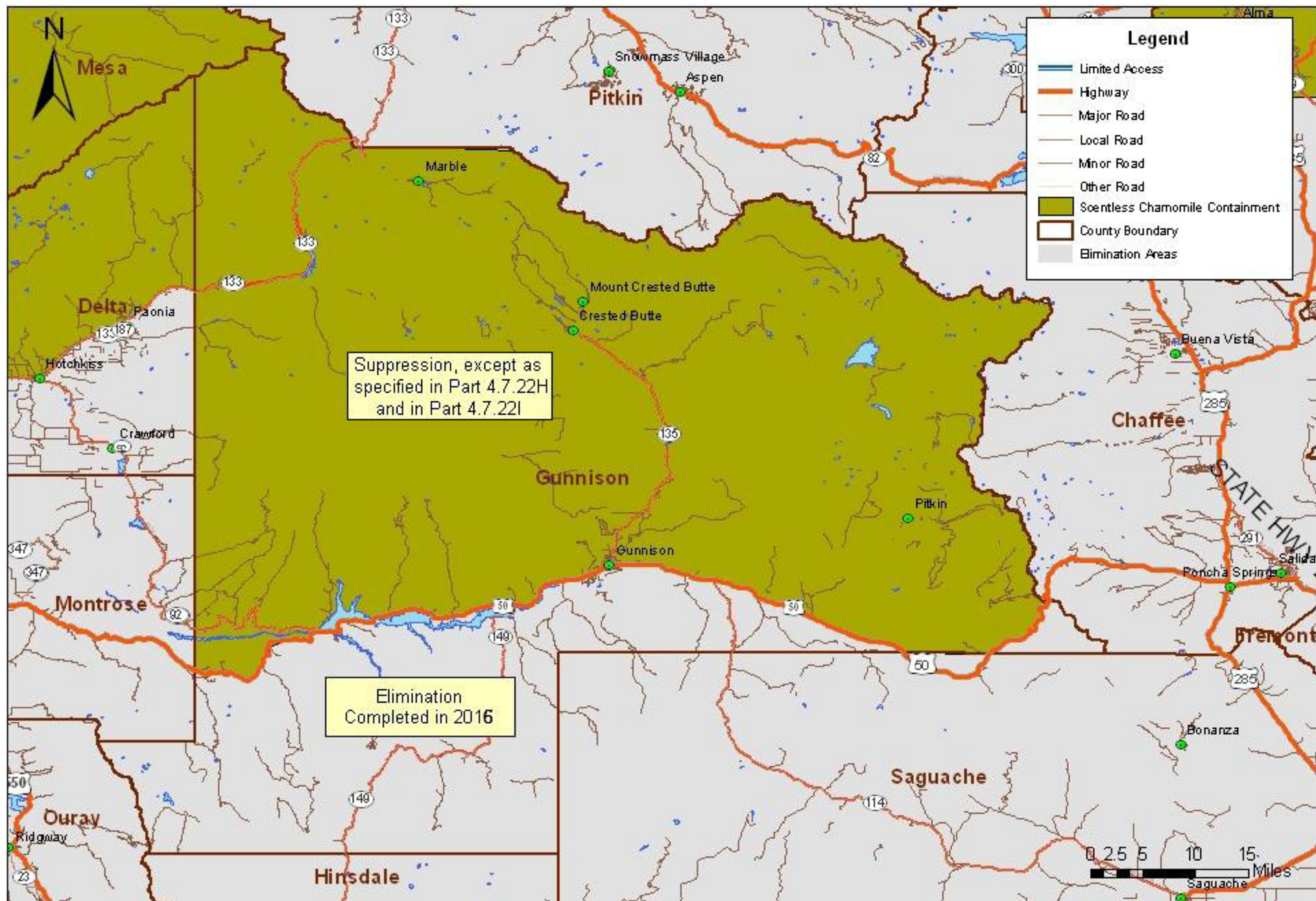




# Scentless, Corn, and Mayweed Chamomile

Figure 206

Gunnison County (*Tripleurospermum perforatum*, *Anthemis arvensis*, and *A. cotula*)

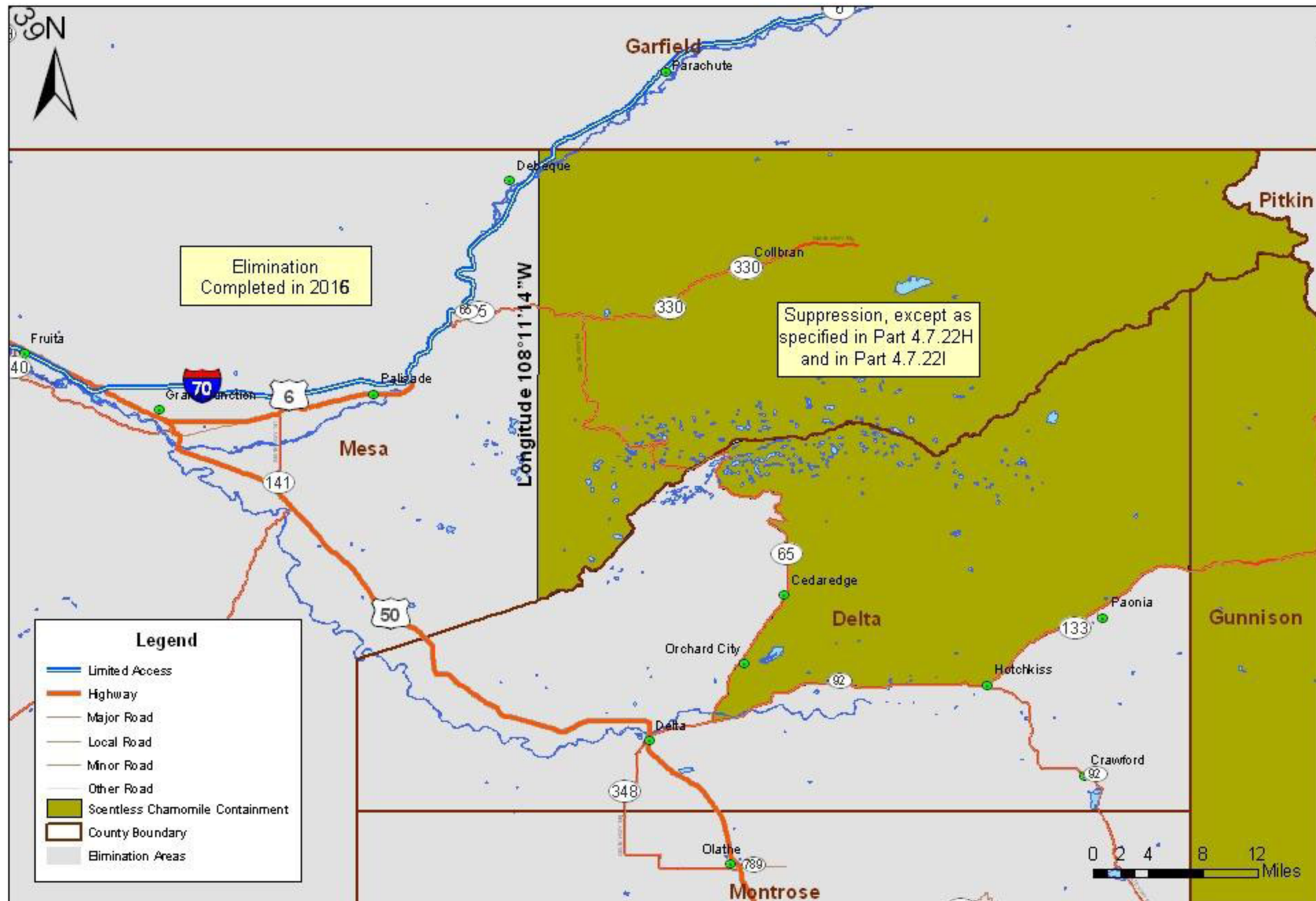


# Scentless, Corn, and Mayweed Chamomile

Figure 207

Mesa County

(*Tripleurospermum perforatum*, *Anthemis arvensis*, and *A. cotula*)





# Scentless, Corn, and Mayweed Chamomile

Figure 208

Park County

(*Tripleurospermum perforatum*, *Anthemis arvensis*, and *A. cotula*)

